

# TC-226

150LB/300LB Two-piece  
full port fire safe ball valve



**TC**<sup>®</sup>  
-VALVE

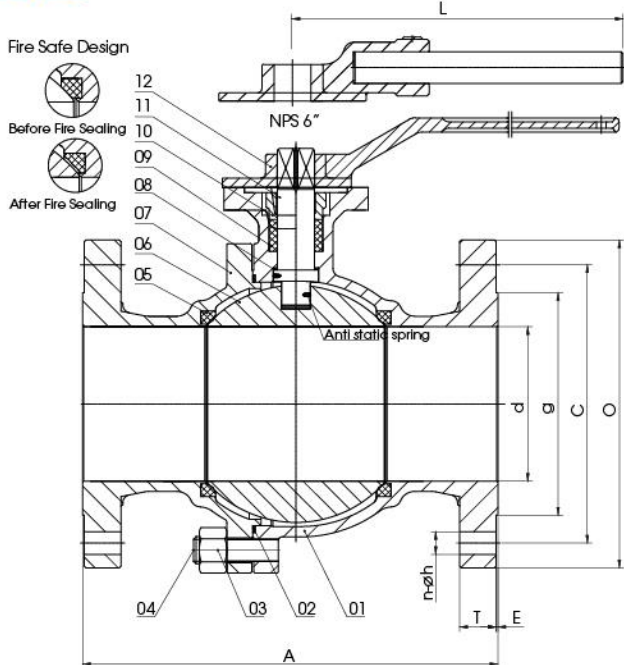
SOW LONG INDUSTRIAL CO.,LTD



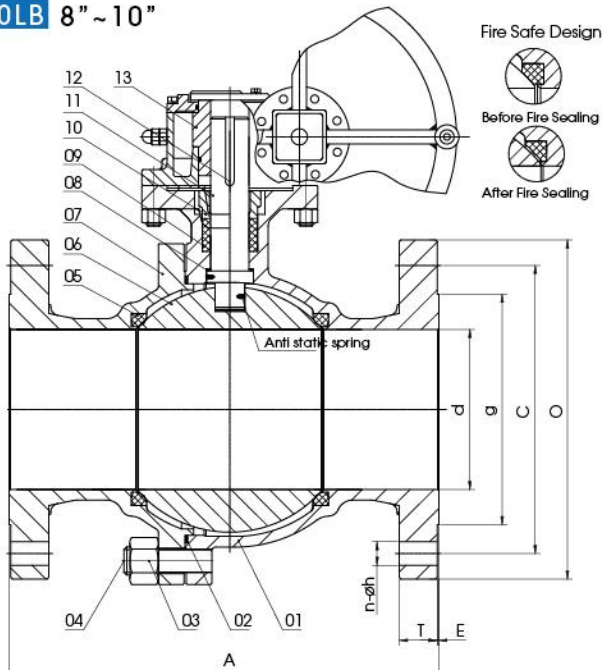
## FEATURES

- FACE TO FACE DIMENSION: ANSI B16.10
- END FLANGE DIMENSION: ANSI B16.5
- DESIGN: API 6D
- TEST: API 598
- FIRE SAFE TEST: API607
- WITH ISO 5211 MOUNTING PAD
- INVESTMENT CASTING BODY
- BLOW-OUT PROOF STEM/FULL PORT
- LEVER OPERATED OR GEAR OPERATED
- ANTI-STATIC DEVICE

### 150LB 2"~6"



### 150LB 8"~10"



### THE MAIN CONNECTION SIZE 150LB

SIZE	d	A	O	C	g	E	T	n-øh	ISO 5211	Torque (N.m) (Included 30% safety factors)	L
2"	49	178	150	120.5	92	2	14.3	4-19	F07	39	235
2-1/2"	64	191	178	139.5	104.8	2	15.9	4-19	F10	78	350
3"	76	203	190	152.4	127	2	17.5	4-19	F10	104	350
4"	100	229	229	190.5	157	2	22.3	8-19	F10	169	420
6"	150	394	279	241.3	215.9	2	23.9	8-22	F12	611	800
8"	201	457	343	298.5	269.9	2	27.0	8-22	F14	1014	-
10"	252	533	405	362	323.8	2	28.6	12-25	F16	2466	-

CLASS	PRESSURE TEST (MPa)		
	SHELL TEST	SEAT TEST	AIR TEST
150LB	3.0	2.2	0.6
APPLICABLE TEMPERATURE		0~120°C	
APPLICABLE MEDIA		W.O.G	

### MAIN PARTS AND MATERIALS

2"~6"

12	LEVER	A216-WCB
11	STEM	SS316
10	GLAND	A216-WCB
9	PACKING	GRAPHITE
8	THRUST WASHER	PTFE
7	BONNET	A216-WCB
6	BALL	A182-F316
5	SEAT	RPTFE
4	STUD	A193-B7
3	NUT	A194-2H
2	BODY GASKET	SS304+GRAPHITE
1	BODY	A216-WCB
NO.	PART NAME	MATERIAL

### MAIN PARTS AND MATERIALS

8"~10"

13	DRVING	ASSEMBLED
12	KEY	ASTM-1045
11	STEM	SS316
10	GLAND	A216-WCB
9	PACKING	GRAPHITE
8	THRUST WASHER	PTFE
7	BONNET	A216-WCB
6	BALL	A182-F316
5	SEAT	RPTFE
4	STUD	A193-B7
3	NUT	A194-2H
2	BODY GASKET	SS304+GRAPHITE
1	BODY	A216-WCB
NO.	PART NAME	MATERIAL

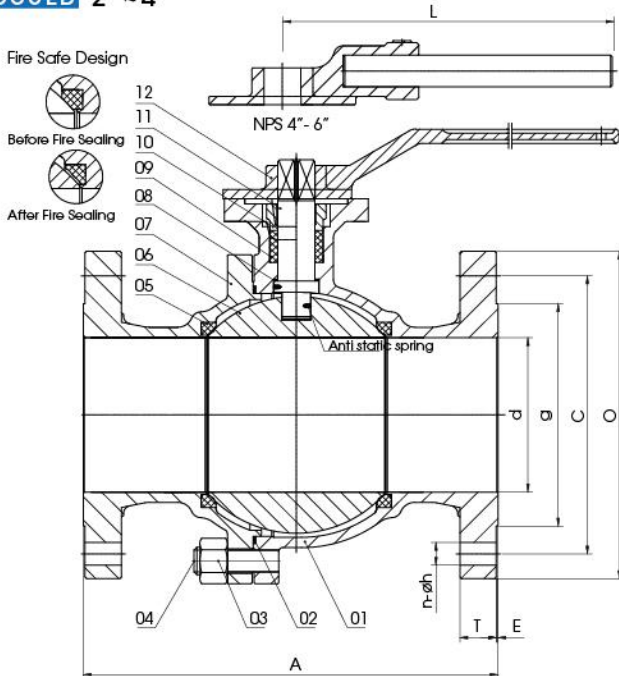




## FEATURES

- FACE TO FACE DIMENSION: ANSI B16.10
- END FLANGE DIMENSION: ANSI B16.5
- DESIGN: API 6D
- TEST: API 598
- FIRE SAFE TEST: API607
- WITH ISO 5211 MOUNTING PAD
- INVESTMENT CASTING BODY
- BLOW-OUT PROOF STEM/FULL PORT
- LEVER OPERATED OR GEAR OPERATED
- ANTI-STATIC DEVICE

### 300LB 2"~4"



### THE MAIN CONNECTION SIZE 300LB

SIZE	d	A	O	C	g	E	T	n-øh	ISO 5211	Torque (N.m) (Included 30% safety factors)	L
2"	49	216	165	127	92	2	20.7	8-19	F10	78	350
2-1/2"	64	241	190	149	104.8	2	23.9	8-22	F10	143	350
3"	76	283	210	168.5	127	2	27.0	8-22	F10	182	420
4"	100	305	254	200	157	2	30.2	8-22	F12	338	800
6"	150	403	318	269.9	215.9	2	35.0	12-22	F14	1209	-
8"	201	502	380	330	269.9	2	39.7	12-25	F16	2015	-

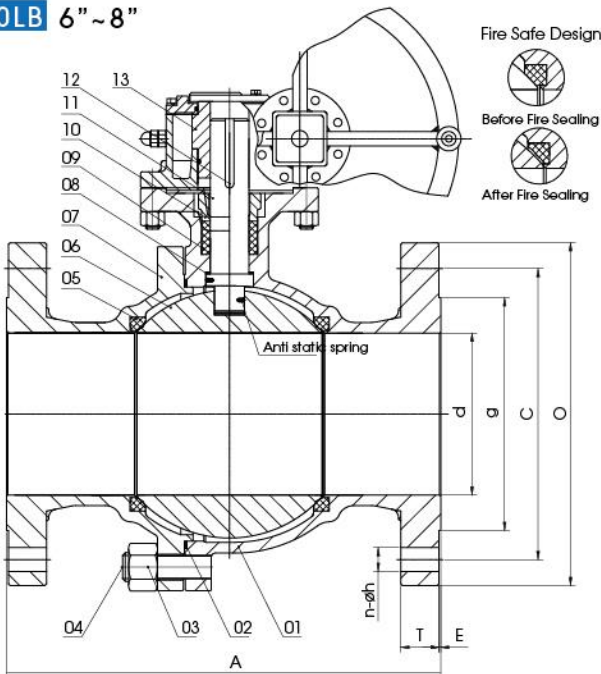
CLASS	PRESSURE TEST (MPa)		
	SHELL TEST	SEAT TEST	AIR TEST
300LB	7.5	5.5	0.6
APPLICABLE TEMPERATURE	0-120°C		
APPLICABLE MEDIA	W.O.G		

### MAIN PARTS AND MATERIALS

2"~4"

12	LEVER	A216-WCB
11	STEM	SS316
10	GLAND	A216-WCB
9	PACKING	GRAPHITE
8	THRUST WASHER	PTFE
7	BONNET	A216-WCB
6	BALL	A182-F316
5	SEAT	RPTFE
4	STUD	A193-B7
3	NUT	A194-2H
2	BODY GASKET	SS304+GRAPHITE
1	BODY	A216-WCB
NO.	PART NAME	MATERIAL

### 300LB 6"~8"



### MAIN PARTS AND MATERIALS

6"~8"

13	DRIVING	ASSEMBLED
12	KEY	ASTM-1045
11	STEM	SS316
10	GLAND	A216-WCB
9	PACKING	GRAPHITE
8	THRUST WASHER	PTFE
7	BONNET	A216-WCB
6	BALL	A182-F316
5	SEAT	RPTFE
4	STUD	A193-B7
3	NUT	A194-2H
2	BODY GASKET	SS304+GRAPHITE
1	BODY	A216-WCB
NO.	PART NAME	MATERIAL



**HEAD OFFICE-TAIWAN**

NO.1, LN 1485, GUANGXING RD., TAIPING DIST.,  
TAICHUNG CITY 41173, TAIWAN (R.O.C.)

**FACTORY-ZHONG SHAN CHING**

DABU CHENGGUI INDUSTRIAL ZONE, SANXIANG TOWN,  
ZHONGSHAN CITY, GUANGDONG, CHINA

Distributor:

**T<sup>®</sup>-VALVE**