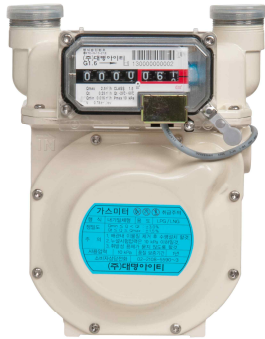


Domestic Diaphragm Gas Meter

G1,6~G6



FEATURES

- * Users or gas-suppliers can easily read the counter value of gas meters from the long distance.
- * External power is not needed to generate pulse. Magnet and reed switch generate the pulse according to the volume.
- * Impulse : 0,01 m3 (From G1,6~G6)

FACTORY ORDER

This remote-reading type of domestic gas meters are recommended to order in advance. Because, we install and test reed switch in our factory to prevent failure on the site.

Commercial Diaphragm Gas Meter

G10~G40
(For remote reading)



FEATURES

- * Users or gas-suppliers can easily read the counter value of gas meters from the long distance.
- * External power is not needed to generate pulse. Magnet and reed switch generate the pulse according to the volume.
- * Impulse :
G10 ~ G40 / 0,1 m3

- * Magnetic Protection :
Pulses are not influenced by magnet.

FACTORY ORDER

This remote-reading type of domestic gas meters are recommended to order in advance. Because DMIT install and test reed switch in our factory to prevent failure on the site.

OR

End user or supplier of commercial - diaphragm gas meters can install reed switch on the site, if you have reed switch.

How to install reed switch?

(For commercial diaphragm gas meters)



1. Prepare reed switch.



2. Where to insert reed switch.

Very below the rolling counter, you can find silver sticker. Please remove the sticker off.



3. Remove the plastic part.

With driver or something sharp tools, you can remove the plastic part.



4. Insert reed switch.

Insert the reed switch into below index cover like picture shown.



5. Screw the bolt.

Fasten the reed switch as screwing the bolt.



We, DMiT, always do our best to give you best solution.

Please visit our website. www.dmit.kr
Or contact dmitkor@empas.com